



Special Educational Needs and Disability (SEND)

Provision offered at Birchington CE Primary School



At Birchington Church of England Primary School all children are valued, respected and welcomed whatever their educational need.

There are many ways in which we support children with Special Educational Needs and Disabilities and every child who needs extra provision is included in the activities we offer. As well as the provision our school staff are able to offer, we also make use of a range of external agencies where necessary.

Learning Support

Speech and Language



We employ qualified Speech and Language therapists for 2 days every week. Our school has joined with 3 other M7V partnership schools to share her expertise. We also link with other schools when appropriate to.

Our therapists are able to use their skills to target pupils who have more severe Speech and Language needs. This means children only have to wait a short amount of time for a full Speech and Language assessment and follow up support. Their other roles include, meeting with parents and carers to explain reports and assessments and discussing Speech and Language programmes with them. They also work 1:1 with pupils and train other staff at our school to use specialist programmes of support. Our trained Teaching Assistants use the Speech and Language Link tests to ensure children with Speech and Language needs are identified early and receive appropriate support, whether that be with the Therapist, with them on a 1:1, small group basis or in the classroom.

Gifted and Talented Pupils (G&T)



A number of our pupils display gifts and talents in particular areas of the curriculum, in Sport, the Arts and elsewhere. Pupils who possess or develop these special skills are identified by their teachers as well as by their parents and carers. We can then provide them with learning opportunities and enrichment experiences both in and outside the classroom with the aim of harnessing, developing and celebrating these gifts and talents.

English as an Additional Language (EAL)



Some of our pupils' first language is not English. If this is the case, a child may need some additional support in order to support their understanding of English and develop their confidence and academic development. Intervention is provided in and outside the classroom as necessary.

Early Literacy Support (ELS)



ELS intervention takes place in Year 1. The children join in with different English activities to ensure they achieve the required standard expected of pupils by the end of the year.

Additional Literacy Support (ALS)



ALS is Additional Literacy Support and is provided to Key Stage 2 children who may need a little extra help to achieve the expected standard by the end of Key Stage 2.

Extra Phonics



Some children find learning phonemes and graphemes at a fast rate a little daunting and so by using extra Phonics, alongside our Read, Write, Inc. lessons, this process is slowed down. Pupils work in very small groups with a Teaching Assistant and they are taught using 'hands on' activities, at a rate which suits them.

Number Groups



A variety of number and Maths groups take place throughout the school, including First Class Number. These ensure that children have a good understanding of the number system and that they are working at an age-appropriate level.

Sensory Circuits/Heavy Play



Sensory Circuits

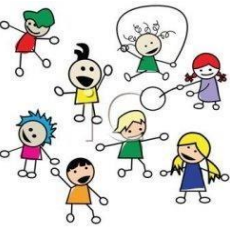
Sensory Circuits are a form of sensory integration intervention. It involves a sequence of physical activities that are designed to alert, organise and calm the child. The sensory circuit aims to facilitate sensory processing to help children regulate and organise their senses in order to achieve the 'just right' or optimum level of alertness required for effective learning.

Heavy Work



Heavy work is any type of activity that pushes or pulls against the body. These activities can help kids with sensory processing challenges feel centered. Heavy work engages a sense called proprioception, or body awareness.

Fizzy



Fizzy is a gross motor skills program, focusing upon balance and co-ordination. Its aim is to develop confidence and assist movement. This program often takes place during PE lessons but individuals or small groups may also have Fizzy sessions to develop these skills at other times during the week.

Clever Hands



Clever Hands is a fine motor skills program which helps children use their 'pincer grip' and fingers to manipulate small objects. These skills are vital to the development of children. Activities the child would be involved in could include threading, cutting, tracing and peg work. Pupils work in small groups with a Teaching Assistant to practice these skills.

Information regarding the Fizzy and Clever Hands programmes can be found through the link below.

<http://www.ekhft.nhs.uk/patients-and-visitors/information-for-patients/patientinformation-leaflets/fizzy-leaflets/>

The Kent Parent Partnership Service offers support and advice for parents and families of disabled children as well as those with Special Educational Needs.

<http://www.kent.gov.uk/education-and-children/special-educational-needs/support-andadvice/kent-parent-partnership-service/kent-parent-partnership-leaflets#>

Emotional Support

Social Skills and Well-being Groups



Social Skills and Well-being groups are led by our TAs and on a small scale with members of our Pastoral Team. Their aims are to build self-esteem, assist in emotional and physical well-being and teach the children how to interact successfully and appropriately with others.

Children take part in role play and activities which involve turn taking, playing games, conversations and social stories, arts, crafts and cooking with other children. Children also learn to deal with anger and frustration, build resilience and discuss issues related to transition.

Nurture



Nurture activities are provided for children so they can experience a sense of well-being in a safe and secure environment. Nurture helps children to interact with others and take part in experiences which they might not have the opportunity to do at home.

Extra Support



Our Parent Support Advisor and Child Support Worker are also qualified adult and child Counsellors with a Diploma in Therapeutic Counselling and a Diploma in Counselling Children and Young people. Our Parent Support advisor is also trained in Bereavement Counselling.

Zones of Regulation

The ZONES of Regulation™

BLUE ZONE	GREEN ZONE	YELLOW ZONE	RED ZONE
Sad Sick Tired Bored Moving Slowly	Happy Calm Feeling Okay Focused Relaxed	Frustrated Worried Silly/Wiggly Excited Loss of Some Control	Mad/Angry Terrified Elated/Ecstatic Dejected Out of Control

©2011 The Zones Publishing, Inc. All rights reserved.
From the book 'The Zones of Regulation' by Dr. Ross W. Greene, Ph.D. www.zonesofregulation.com

Our staff are trained in using Zones of Regulation to help the children recognise and regulate their emotions. Pupils learn how to respond appropriately to different emotions and they learn strategies to help them return to the 'green zone'.