



Welcome back to school



We are so happy that you are joining Year 1 in September. All the grown-ups are really looking forward to meeting you and being part of your learning.

Here is some information about your new year group so you are ready on your first day.

Your Phase Leader is Mrs Derbyshire



fran.derbyshire@birchnngton.kent.sch.uk

Your teachers are:

1BC

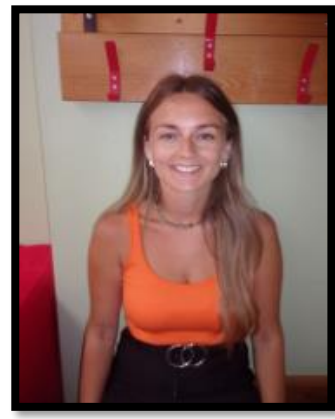


Mrs Barber and Mrs Couldridge

gemma.barber@birchington.kent.sch.uk

suzanne.couldridge@birchington.kent.sch.uk

1J



Miss Jones

rhia.jones@birchington.kent.sch.uk

Mrs Brazier will teach in your class
on a Friday.

Here are the adults in the year 1 team



Mrs Brazier



Miss Nicol



Miss Forrest



Miss Howdle

When do I come back to school?

The first day of the new term is Tuesday 2nd September.

Where will I come into school?

You will need to come into school through the main school gates on Kings Road or by the Noah's Ark entrance. Grown-ups will be by the gates to welcome you every day. Remember to leave your cuddly toys and games with whoever drops you off for safe keeping. The gates will be open from 8.30am until 8.50am.



If you are late, you will need to go to the main school office with your adult.



What will happen at the end of the day?

School finishes at 3.20pm every day. Your parents will be able to collect you from the classroom door.



What will I need to bring to school?

You will need a small bag that will fit inside your locker to carry your reading book and plastic water bottle (with a sports cap). No metal bottles please. If you are not having a school dinner, you will need a packed lunch. Remember to make sure that everything is named. Please keep a pair of plimsolls in your locker.



Your PE days will be on a Wednesday. On these days, you will need to wear your PE kit and your school jumper to school.



Where will my classroom be?

Your classroom will be in the Mr Mac building. You can go into your classroom in the mornings through your classroom door.

Where will I eat my lunch?

Everyone will be eating their lunch in the Mr Mac hall opposite your classroom. This is also where you have PE lessons and Collective Worship.

What will I learn about in Year 1?

This will be your first year following the National Curriculum. In English, we will continue learning to read using our RWI programme and in writing, we will be learning to write sentences using capital letters, full stops and commas based on the books we will share together. In Maths, we will learn new concepts and skills associated with numbers up to 100, and explore fractions, time, measures and shape. As part of our Science learning, we hope to visit Howlett's to find out more about a range of animals and visit a local park to enrich our learning about the weather and seasons. We will also learn about the properties of different materials and a variety of different plants. In RE, we will explore Jesus' life through The Nativity and The Easter Stories. We will be introduced to Judaism and explore some of their precious artefacts. We will have fun designing and making our own puppet and fruit salad in DT and in History, we will look at toys - old and new and the lives of Mary Seacole and Florence Nightingale. We will learn all about the United Kingdom, our local area and weather and seasons in Geography and the Sports coaches will encourage us to learn and develop a variety of skills in PE. In Art, we will experiment with different media such as paint, pencils and different collage materials to create artwork based on the work of a variety of different artists.

Will I have homework?

Each week, you will need to read your Read Write Inc. home reading book three times to a grown up. Your grown up's homework is to tick the grid each time you read! You will also have another reading book which might provide challenge for you to share at home. You will be set some spellings to practise using games on Spelling Shed and we would like you to do this for at least five minutes each day. You will also have a Phonics and a Maths activity to complete, based on our weeks learning. Teachers will send out homework every Thursday to be completed and returned by the following Thursday.

Where will I have play time?

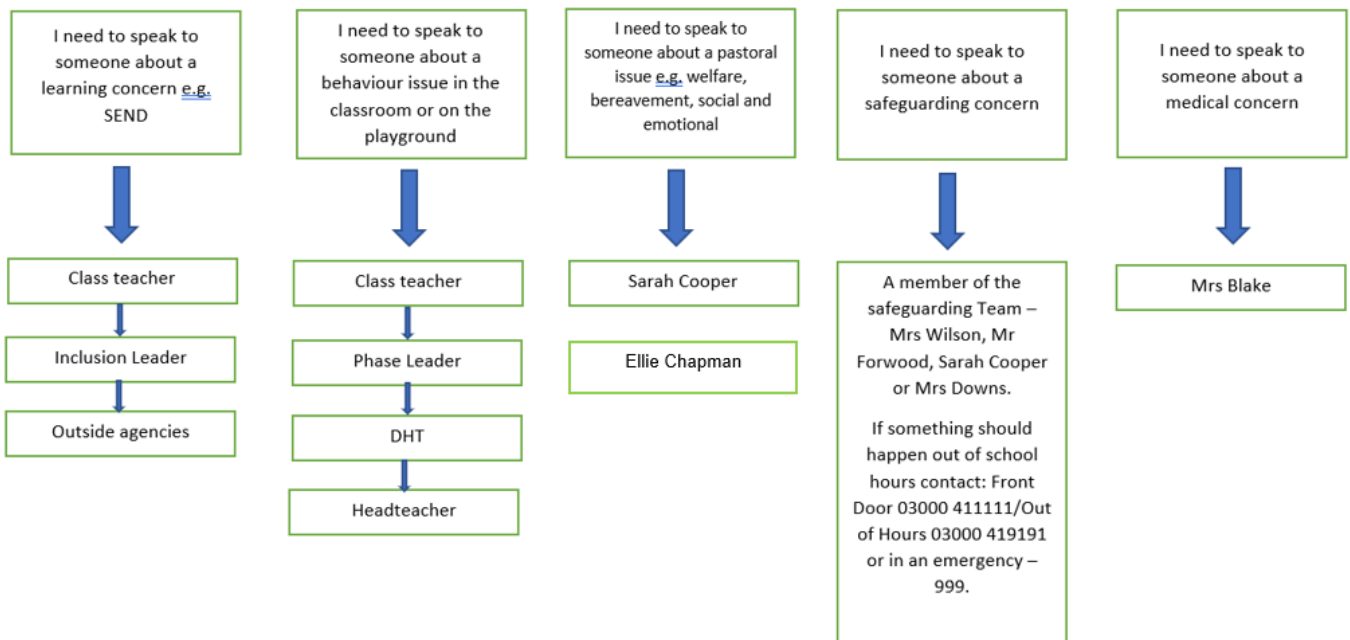
You will have play time on the Rossetti playground with the rest of your year group. There will be toys for you to play with and familiar grown-ups to look after you.



Parents page

Who do I see if I have a concern?

Who to contact if you have a worry, a question or a concern



Suggestions you can do to aid your child settling back into school.

- Ensure a good bedtime routine: Try keeping to the same routine each night:
Children aged 3 to 5 need 10 to 13 hours
Children aged 6 to 12 need 9 to 12 hours
- Minimise device use 2 hours before bedtime to ensure children are calmed down ready for bed: Discourage use of electronics in the bedroom to encourage children to read as a wind down activity.
- Say goodbye in a positive way and remind children "I'll see you soon"
- Read through new teacher booklets with your child to ensure children are clear on what school will be like on their return.